

Reentry Plan & Manual

Introduction

This procedure manual, although complete in scope, remains a living document. Opportunities remain open for members of our community to raise concerns, seek clarification, or bring forward new ideas. At the same time, this document will allow us to move forward in our planning with the aim of reducing the struggles of children and youth under pandemic conditions while maximizing the ability of adults to stay safe and keep the young people entrusted to them safe.

While some details will continue to be refined due to community dialogue and emerging insights from science, this document reflects the best thinking of world-class experts in their fields.

Executive Summary of
Covid-19 Safety & Facilities Manual
Spring 2021

- ❖ To keep teachers, staff, and students and families safe, no visitors will be permitted to enter the building. (A1)
- ❖ All students and staff will have temperature taken and submit to health screening each day. (A1)
- ❖ Staff and students should not come to school if they have symptoms. A teacher or staff member who develops symptoms during the day must notify administration to arrange backup supervision of students and leave as soon as possible. (A3)
- ❖ Atlanta Public Schools (APS) will maintain communication with local boards of health for surveillance and tracking of self-reported cases to the school district as applicable. (A6)
- ❖ All APS students and staff will be home every Wednesday for asynchronous learning so that the building can be cleaned. (A7)
- ❖ Employees, students, and approved visitors must wear an appropriate mask or face covering correctly while inside the building. If students arrive at school without a mask, students will be provided with a mask or face covering to use during the day. (B2)
- ❖ All students and staff must engage in frequent handwashing, including upon arrival, after bathroom use, after coughing or sneezing, and before dismissal. Although handwashing is highly encouraged, hand sanitizing stations will be provided as an extra safety measure in every classroom. (B4)
- ❖ Students will not share classroom supplies and should plan to bring or use those assigned to them throughout the day. Students should NOT leave any personal belongings at school. Students will be expected to take home all personal items at the end of each day. (B6)
- ❖ Any classroom with more than 10 students returning for in person learning, will be divided into 2 evenly split groups. (B4)
 - Group 1 in the classroom with the teacher on Mondays and Tuesdays and assigned to other labs, virtually on Thursdays and Fridays.
 - Group 2 in other labs virtually on Mondays and Tuesdays and in the classroom with the teacher on Thursdays and Fridays.
 - Teachers will post the group assignments in their Google Classroom.
 - Teachers helping to cover (in other labs) will not exceed five students per lab.
- ❖ Teachers should limit all materials to digital only, as much as possible. If a teacher is making any copies in a workroom, only one teacher is allowed in the room at a time. (B6)
- ❖ Water foundations have been disabled. Students are encouraged to use their own water bottles that are marked with their names on it and to fill it each day at home. Bottle filling stations will be available for students and staff. (B7)

-
- ❖ Our community must be prepared for the possibility that rising COVID-19 cases may cause state officials to call for another long-term shutdown of schools. In the event of school closure, all students will use virtual learning. (B9)
 - ❖ Locker use will be prohibited, and students will be required to carry all their belongings with them throughout the day. (C1)
 - ❖ Desks and/or tables in the classrooms will be marked with tape to allow spacing for social distance. (C1).
 - ❖ Only one student from the same class will access the bathrooms at the same time.
 - ❖ Individual students should utilize the first-floor bathrooms upon drop off and pick up.
 - ❖ Students should not congregate in the bathrooms under any circumstances.
 - ❖ If there are 2 students in the bathroom, students should not enter the bathroom and should wait outside for others to leave.
 - ❖ All bathrooms will be cleaned numerous times during the day on a set schedule. (C4)
 - ❖ Parents will not be able to bring items to students during the day unless it is medically necessary and approved by the school nurse. Non-essential APS staff who are not assigned to a school building will not be allowed to enter without express permission of the principal. (C8)
 - ❖ All meetings of the public (e.g., ACCA Board of Director meetings) will be held virtually (C8).
 - ❖ All clubs and activities will remain virtual. (C8)
 - ❖ Students who need to take regular medication while at school will be visited by the school nurse. The nurse will provide the necessary medications to students at that time. (C11)
 - ❖ Students will be required to wear masks and maintain physical distance while on the bus. However, given current realities, it is likely not possible to consistently maintain the recommended 6 feet social distancing on school buses. (C12)
 - Upon entry into the building students will be pre-screened and temperatures will be checked.
 - Individuals must stay home if they have any symptoms of COVID-19.
 - Student's temperatures will not be checked prior to them getting on the bus.
 - ❖ Students who drive will be allowed to do so and must register their cars with the school business manager. Students are NOT to congregate in the parking lot under any circumstance.
 - Students must utilize the front entrance to enter the building (they cannot use rear parking lot door).
 - Upon entry into the building students will be pre-screened and temperatures will be checked.
 - Individuals must stay home if they have any symptoms of COVID-19.
 - ❖ Parents who are not comfortable with the bus or having their student drive should use the rear parking lot for drop-off and arrival.

-
- ❖ Parents have been informed that they should expect significant delays because of the need for morning screening and afternoon socially distanced dismissal. (C12)
 - ❖ ACCA does not serve breakfast or lunch. Students should participate in the home school's breakfast and lunch protocols. Students will not be allowed to eat in the labs.
 - ❖ In the event of exposure to Covid-19, the school will follow protocols established by Atlanta Public Schools and local health departments, including the following:
 - Information is shared with the district Coordinator of Comprehensive Health Services
 - District Coordinator will notify Health Department to complete contact tracing.
 - Communication with families and staff of potential exposure,
 - Depending on the outcome of any investigation, a determination is made as to whether a partial closure is needed or whether select individuals need to be quarantined,
 - The school, classrooms and office areas may need to close temporarily as students, teachers, and staff isolate and the area is cleaned. In consultation with the local public health department, the school district may also decide whether school closure is warranted, including the length of time closure may be necessary. (E2)
 - ❖ All APS employees have completed Covid-19 Safety Standards Training. (F1)

Specifics for Parents, Students and Staff:

The expectations, procedures, and protocols for students attending in-person classes are detailed below:

Visitors & Meetings

- ❖ To keep teachers, staff, and students and families safe, **no visitors will be permitted to enter the building.**
 - All meetings will be held via Zoom.
- ❖ All meetings of the public (e.g., ACCA Board of Directors) will be held virtually.
- ❖ All clubs and activities will remain virtual.

Arrival/Dismissal

- ❖ All students will have temperature taken upon arrival in the building.
- ❖ Students **should not** come to school if they have any symptoms of **any illness.**
- ❖ Upon entry into the building students will be pre-screened and temperatures will be checked.
- ❖ Individuals must stay home if they have any symptoms of COVID-19.
- ❖ Students will be required to wear masks and maintain physical distance while on the bus. However, given current realities, it is likely not possible to consistently maintain the recommended 6 feet social distancing on school buses.
 - Parents who are not comfortable with the bus or having their student drive should use the rear parking lot for drop-off and arrival.

-
- Student's temperatures will not be checked prior to them getting on the bus.
 - ❖ Students who drive will be allowed to do so and must register their cars with the school business manager. Students are NOT to congregate in the parking lot under any circumstance.
 - ❖ You should expect significant delays because of the need for morning screening and afternoon socially distanced dismissal.

Check In/Check Out

- ❖ Check In/Check Out Processes- There will be **no check in/check out** unless a student gets sick at school.
 - If a student has an appointment the day of school, the student should NOT come to the building and should remain home and log into class virtually.
 - If a student is late to school, they should instead stay home and attend class virtually.
 - If a student gets sick during the day and must be checked out, the parent will present ID via the camera at the front door.
- ❖ All APS students will be home every Wednesday for asynchronous learning so that the building can be cleaned.

In Person Requirements

- ❖ Students must wear an appropriate mask or face covering correctly while inside the building. If students arrive at school without a mask, students will be provided with a mask or face covering to use during the day.
 - Students who do not wear a mask correctly will be directed to do so.
 - **Students refusing to wear a mask correctly will be returned to virtual instruction and could face disciplinary action for insubordination.**
- ❖ All students must engage in frequent handwashing, including upon arrival, after bathroom use, after coughing or sneezing, and before dismissal. Although handwashing is highly encouraged, hand sanitizing stations are provided as an extra safety measure in every classroom.
- ❖ Students must bring their own personal computers or APS issued devices to school every day and back home with them every day.
- ❖ Students will not share classroom supplies and should plan to bring or use those assigned to them throughout the day.
- ❖ Only students with medical conditions can utilize the elevators (must be documented and approved by School Nurse and administration).
- ❖ Locker use will be prohibited, and students will be required to carry all their belongings with them throughout the day.
- ❖ Students should NOT leave any personal belongings at school. Students will be expected to take home all personal items at the end of each day.
- ❖ Any classroom with more than 10 students returning for in person learning, will be divided into 2 evenly split groups.
 - Group 1 in the classroom with the teacher on Mondays and Tuesdays and assigned to other labs, virtually on Thursdays and Fridays.
 - Group 2 in other labs virtually on Mondays and Tuesdays and in the classroom with the teacher on Thursdays and Fridays.

-
- Teachers will post the group assignments in their Google Classroom.
 - Teachers helping to cover (in other labs) will not exceed five students per lab.
 - ❖ Water foundations have been disabled.
 - Students are encouraged to use their own water bottles that are marked with their names on it and to fill it each day at home.
 - Bottle filling stations are located inside the building for students and staff.
 - ❖ Desks and/or tables in the classrooms will be marked with tape to allow spacing for social distance.

Bathrooms

- ❖ Only one student from the same class will access the bathrooms at the same time.
- ❖ Individual students should utilize the first-floor bathrooms upon drop off and pick up.
- ❖ Students should not congregate in the bathrooms under any circumstances.
- ❖ If there are 2 students in the bathroom, students should not enter the bathroom and should wait outside for others to leave.
- ❖ All bathrooms will be cleaned numerous times during the day on a set schedule.

Medication

- ❖ Parents will not be able to bring items to students during the day unless it is medically necessary and approved by the school nurse.
- ❖ Students who need to take regular medication while at school will be visited by the school nurse. Nurse will provide the necessary medications to students at that time.

Meals

- ❖ ACCA does not serve breakfast or lunch. Students should participate in the home school's breakfast and lunch program. Students will not be allowed to eat in the labs.

Exposure Information





- ❖ In the event of exposure to Covid-19, the school will follow protocols established by Atlanta Public Schools and local health departments, including the following:
 - Information is shared with the district Coordinator of Comprehensive Health Services
 - District Coordinator will notify Health Department to complete contact tracing.
 - Communication with families and staff of potential exposure,
 - Depending on the outcome of any investigation, a determination is made as to whether a partial closure is needed or whether select individuals need to be quarantined,
 - The school, classrooms and office areas may need to close temporarily as students, teachers, and staff isolate and the area is cleaned. In consultation with the local public health department, the school district may also decide whether school closure is warranted, including the length of time closure may be necessary. (E2)

- ❖ Our community must be prepared for the possibility that rising COVID-19 cases may cause state officials to call for another long-term shutdown of schools. In the event of school closure, all students will use virtual learning.

APSprotects

Student, Staff + Facility Safety

Atlanta Public Schools (APS) is constantly working proactively to keep our students and staff healthy and safe, especially in our COVID-19 environment. Here are just a few of our ongoing health and safety efforts:

AIR	WATER	BUILDINGS + BUSES	PEOPLE
 <ul style="list-style-type: none"> · Invested \$68 million to upgrade our heating, ventilation and air conditioning (HVAC) systems · Serviced and monitored over 20,000 pieces of HVAC equipment in schools and buildings · Upgrading HVAC system filters to most efficient version the system can handle · Increasing pre-occupancy and post-occupancy HVAC run times from two hours to three hours 	 <ul style="list-style-type: none"> · Continuous flushing and disinfecting of water sources in buildings (water fountains, sinks, showers, etc.) · Proactive testing for Legionella pneumophila · Use of bottled water and bottle filling stations in schools 	 <ul style="list-style-type: none"> · Use of fogging machines for commercial-grade cleaning/sanitizing of schools and buses · Twice daily wipe downs and overnight cleaning of high touch common areas · Use of hand sanitizing stations in common areas and classrooms · Set building capacity levels at 60% for in-person learning to implement social distancing to the greatest extent possible · Limited use of APS facilities by outside organizations 	 <ul style="list-style-type: none"> · Developed a comprehensive COVID-19 testing strategy · Providing personal protective equipment (PPE) for students and staff and requiring the use of PPE in schools and buildings · Additional screening measures and temperature checks upon entry into buildings · Practicing social distancing and other protocols per CDC guidance · Limiting class sizes and the number of people in buildings

For more information on the District's health and safety efforts, visit www.atlantapublicschools.us/reopen



CONTENTS

Section A: Maintaining Health and Safety	10
A1. Daily Health Checklist	10
A2. Students Who Need Medical Attention Including Due to COVID-like Symptoms	10
A3. Protocol for Staff Members Who Develop Symptoms While at School	11
A4. Return to Work or School	11
A5. Employee Absences To encourage and support staff members to stay home when sick, Atlanta Public Schools has communicated information regarding the expanded paid sick leave benefits available under the federal Families First Coronavirus Response Act, as well as other sick leave benefits that are available. Employees can access this information on the employee-only Staff Hub site. (This section is subject to change based on HR protocols)	11
A6. Tracking and Tracing	13
A7. Asynchronous Learning Wednesdays	13
Section B: Cleaning, Hygiene and Environmental Health	14
B1. Protective Equipment	14
B2. Face Coverings and Masks	14
B3. Public Health Signage	16
Signage will be used throughout facilities for reminders on health practices, protocols, and hygiene.	16
B4. Procedures to Ensure Frequent Hand Washing	16
B5. How to Cough or Sneeze	17
B6. Difficult-to-Clean Classroom Materials	17
B7. Protocols for Cleaning Facilities under Standard Conditions	17
B8. Ventilation	19
B9. Be Prepared for Long Term, COVID-Related, Districtwide Shut-Down	19
Section C: Physical Distancing	20
C1. Maintaining Physical Separation	20
C3. Utilizing Outdoor Space	21
Outdoor space will be used when feasible.	21
C4. Procedures for Student Use of Bathrooms	21
C5. Staffing and Human Resources	21
C6. Prohibition on Gatherings and Field Trips	21

C7. Avoiding Clusters and Groupings	21
C8. Eliminating Unnecessary Entry into School Buildings	23
C10. Policy on Tutors and School Volunteers	23
C11. Safe Administration of Medication	23
C12. Transportation Procedures	23
C13. Food & Nutrition Services	24
Section D: Communication	24
E1. Coordination with Public Health Officials	26
E2. Emergency Building/Classroom Closure Policy	26
Section F: Education and Training	28
F1. Employee Communication and Training	28
F2. Ongoing Education for Adults	28
F3. Educating Students on Safety Precautions	29
Section G. Scheduling	29
Appendix	30

Section A: Maintaining Health and Safety

A1. Daily Health Checklist

As part of the social impact of re-opening, students and employees must stay home if they:

1. Have any [symptoms of COVID-19](#)
2. Have tested positive for COVID-19 and have not yet been cleared to return to work/school by a medical professional.
3. Are in contact of someone *confirmed* to have COVID-19 within the past 14 days.

All students and staff will have a temperature screening upon arrival.

To keep teachers, staff members, and students safe, ACCA is prohibiting any visitors during the school day unless it is for a bona fide reason.

A2. Students Who Need Medical Attention Including Due to COVID-like Symptoms

Several changes to health procedures have been put in place to maintain the highest safety standards when students need medical attention during the school day.

Most importantly: the nurse's clinic/office will no longer accept drop-ins or have an open-door policy during the school day. Teachers and staff will ring the emergency button for an administrator who will let the nurse know a student is in route for any unexpected medical need including illness or injury so that the nurse can be prepared.

If a student exhibits any symptom of illness, teachers will contact the nurse via the front office. The nurse will ask a few questions to determine whether the student needs to go to the "Care Room."

Care Room Procedure (Isolation Room)

- Staff and students that present with symptoms of communicable disease (fever/100.4+, cough, runny nose) during health screenings should be evaluated by the school nurse for further follow up.
- If symptoms are confirmed, symptomatic individuals will be escorted to the Care Room on each campus. Parents will be contacted for pickup and provided further guidance by the school nurse. Schools will ensure symptomatic students safely remain under the supervision of a staff member until parents or guardians arrive.
- Individuals presenting with a fever cannot return until symptom-free for 24 hours without fever reducing medications. If a healthcare provider suspects COVID-19 or they have been identified as a "close contact" to a confirmed positive case, they should remain out of school and follow the "return to school and childcare guidance after Covid-19 illness or exposure".

-
- Cleaning and disinfection of the designated space will take place within 24 hours following the student's departure per DPH guidelines.

School Clinic Procedure

- Students who will visit the clinic for issues outside of COVID will be evaluated and care will be provided, as necessary.
- The student will either go back to the class or be dismissed according to the nurse's evaluation. If the student needs to be picked up, the student will be escorted outside rather than the parent entering the building to pick them up.
- Feminine hygiene products will be kept in the Receptionist Office (1st floor) College and Career Center (2nd floor) so students will not have to go to the nurse for any needs, but rather the receptionist or counselor.

A3. Protocol for Staff Members Who Develop Symptoms While at School

A teacher or staff member who develops symptoms during the day must notify the Administration by email or text to arrange backup supervision of students and leave as soon as possible.

Do **NOT** come to school if you have symptoms. Employees who develop symptoms at home should contact their healthcare provider and obtain testing at their nearest and most convenient location. Employees may refer to the [Georgia Department of Health](#) for current testing locations in Georgia.

A4. Return to Work or School

COVID-19 can be without symptoms, or present with a range of symptoms - from mild to life-threatening. Anyone who answers YES to any question on the daily health checklist must follow the [procedures](#) described by the APS health services department.

A5. Employee Absences

To encourage and support staff members to stay home when sick, Atlanta Public Schools has communicated information regarding the expanded paid sick leave benefits available under the federal Families First Coronavirus Response Act, as well as other sick leave benefits that are available. Employees can access this information on the employee-only Staff Hub site. (This section is subject to change based on HR protocols)

Do not come to school if you are sick. Any staff member, student, or parent/caregiver who develops symptoms of COVID-19 at home should NOT come into the school. Staff members who test positive will quarantine under the guidelines set forth by the district.

If you are sick or have a positive test result, please contact your administrator immediately.

Please follow [these guidelines](#) for returning to work:

Employee Return to Work Procedures

The [procedures for employees](#) returning to work from a variety of COVID-19 related situations have been updated to match recently revised guidance from the Georgia Department of Public Health (DPH). Please review these procedures in their entirety by [clicking here](#).

Where attendance at the physical work site is necessary, employees who have confirmed COVID-19 via testing, diagnosed COVID-19 without testing, suspected COVID-19 due to symptoms displayed on the job, or exposure to someone with a confirmed or diagnosed case of COVID-19 must follow the [reentry requirements](#) based on their circumstances. If obtaining any of the required testing is difficult, APS' health services department, Valencia.Hildreth@atlanta.k12.ga.us, can provide guidance to employees on how to proceed.

For the purposes of this staff memo, I have provided a summary of two of the return-to-work requirements. [Please click here to review all return-to-work requirements in their entirety](#) and contact your supervisor should you have any questions:

- For employees with a confirmed COVID-19 diagnosis, the employee may return to telework status if available and whenever he/she feels recovered enough to work. The employee may return to the physical worksite:
 - Who had [mild or moderate illness](#)* and are not severely immunocompromised† can return to work after:
 - At least 10 days have passed since symptoms first appeared, AND
 - At least 24 hours have passed since last fever without the use of fever-reducing medications, AND
 - Symptoms (e.g., cough, shortness of breath) have improved, AND
 - The employee has received written confirmation of a negative COVID-19 test.
 - Who had [severe to critical illness](#) (if they were hospitalized for shortness of breath, pneumonia, low oxygen levels, respiratory failure, septic shock, and/or multiple organ failure) * or who are severely immunocompromised† can return to work after:
 - At least 20 days have passed since symptoms first appeared, AND
 - At least 24 hours have passed since last fever without the use of fever-reducing medications, AND
 - Symptoms (e.g., cough, shortness of breath) have improved, AND
 - The employee has received written confirmation of a negative COVID-19 test.

These requirements are subject to change as new guidance and research are developed. [Click here](#) to review all the return-to-work requirements. You can also check for updates on the district's [health alerts page](#).

A6. Tracking and Tracing

How will the district track and trace COVID-19 Cases?

COVID-19 is a reportable disease and confirmed cases are reported by the laboratory or health care provider. Atlanta Public Schools (APS) will maintain communication with local boards of health for surveillance and tracking of self-reported cases to the school district as applicable.

APS Comprehensive Health Services department will monitor and maintain self-reported COVID-19 cases. All surveillance and case investigation efforts will be in collaboration with local and state public health officials to ensure the safety of students and staff. Centers for Disease Control and Prevention (CDC), Georgia Department of Public Health (DPH), Georgia Department of Education (GADOE), local Board of Health (BOH-Fulton and DeKalb) will serve as resources to develop and revise school health guidance.

According to DPH, "A COVID-19 outbreak in a school setting will is defined as: Two or more laboratory confirmed COVID-19 cases among students or staff with illness onsets within a 14-day period, who are epidemiologically linked (e.g., have a common exposure or have been in contact with each other), do not share a household, and were not identified as close contacts of each other in another setting during standard case investigation or contact tracing". If an outbreak is confirmed, schools' closures will be implemented for the timeframe designated by local public health officials.

(Non-Outbreak Closures) When a student, teacher, or staff member tests positive for COVID-19 and has exposed others at the school, classrooms and office areas may need to close temporarily as students, teachers, and staff isolate and the area is cleaned. In consultation with the local public health department, the school district may also decide whether school closure is warranted, including the length of time closure may be necessary.

During either scenario of closures, virtual classes will resume.

Contact tracing will be implemented based on the Georgia Department of Public Health (DPH) and local Boards of Health (Fulton and DeKalb) Guidelines for reportable diseases.

A7. Asynchronous Learning Wednesdays

All APS students and teachers will be home every Wednesday for asynchronous learning. This day will be used by teachers to plan high quality instruction for students. Teachers may work with students providing interventions during this time. Assignments and activities will be placed in Google Classroom for students to participate in during

the day. Professional development and Professional Learning Communities will meet as scheduled. Teachers and staff will not be permitted in the building.

Section B: Cleaning, Hygiene and Environmental Health

B1. Protective Equipment

ACCA will provide support to students and staff to facilitate handwashing and sanitizing. The district has provided protective equipment for the CARE room and to disinfect the classrooms. In addition, plexiglass shields have been installed in labs and the front lobby entrance desk.

B2. Face Coverings and Masks

Employees, students, and visitors must wear an appropriate mask or face covering correctly while inside the building, APS transportation, and within < 6 ft. of another person outdoors. Face coverings are particularly important during talking, movement/physical activity, coughing and sneezing.

APS will provide two cloth masks to all employees and students and disposable surgical-grade masks are available, as needed. We will share information about appropriate mask-wearing techniques. Backup, high quality masks will be readily offered to students and visitors who arrive at the building without one, and schools will assist families with masks if they have any difficulty securing them.

Face shields will be available to those employees working with students/individuals for whom viewing facial expressions is especially important (students with disabilities).

Students who are non-compliant with the mask mandate will be removed from the instructional environment and parental contact made by an administrator. It is expected that all students will enter the building with a mask and if seen without a mask in the building, that will be considered non-compliance. Those students will be sent home to participate in online virtual learning.

Recommended Masks

- It is important to be aware that different masks, fabrics, and materials [provide different levels of protection](#) to the wearer and the public. The gold standard are masks that filter out > 95% of all sized respiratory droplets.
- Cloth Face Masks vary in quality and level of protection. For greatest effectiveness, pay attention to:
 - **Fit:** Cone- or cup-shaped masks that seal well to the sides of your face and do not touch your mouth are best. A bendable metal strip in the

nose-bridge piece holds the mask in place and seals the gaps below your eyes.

- **Comfort:** You should be able to breathe easily with the mask fitting snugly. If the ear loops are too tight, or too loose, use adjustable Velcro 'ear savers'. For cloth masks, wear glasses on top of masks to reduce fogging.
- **Filtration:** Two, or better three, layers provide the greatest filtration to block infectious particles. The mask should be thick enough that you cannot see through it.

May NOT be Worn:

- Masks with valves are unsafe for others and will not be allowed unless covered by a second, surgical-quality mask.
- *Bandanas, gaiters, and fleece or knitted face-coverings do not stay in place well and are not as effective.*

Mask-Wearing Tips

- Surgical masks may be reused if there is no visible damage, dirt, or bad odor. Leave them for several days in a non-humid environment as explained [here](#). Whereas bacteria and fungi grow on cotton, they do not grow on the material that surgical masks are made of.
- Wash cloth masks or face shields daily and label them to avoid confusion.
- Ear savers that connect the ear loops behind the head may be purchased online to improve the fit of the mask and reduce ear-strain.
- Carry 3-4 masks with you to change masks in case of sneezing or other soiling.

Backup Face Coverings

- Additional face coverings will be on hand in case of a need to change after sneezing for example.
- ACCA recognizes that students may arrive at school without a mask or face covering, and under no circumstances will a student be denied access to school in this instance; however, students will be provided with a mask or face covering to use during the day, and schools will reach out to support families who need assistance obtaining a face covering for their student(s).

B3. Public Health Signage

Signage will be used throughout facilities for reminders on health practices, protocols, and hygiene.

- **Signage**

- Provided COVID-19 and Social Distance Packages for schools and administrative buildings
- School leaders determine placement for their respective buildings
- Copies can be made as needed from supplemental packet provided to each school



B4. Procedures to Ensure Frequent Hand Washing

All students and staff must engage in frequent handwashing, including upon arrival, after bathroom use, after coughing or sneezing, and before dismissal. We understand that hand washing will have an impact on time available for teaching and learning during the school day.

APS has purchased additional hand sanitizing stations. Although handwashing is highly encouraged, hand sanitizing stations will be provided as an extra safety measure. Custodial staff will ensure that soap dispensers and disposable towels are stocked, and that supplemental hand sanitizer is available throughout the building.

Signage will be posted in schools with reminders that appropriate public health practices call for individuals to use soap and water to wash all surfaces or their hands for at least 20 seconds, wait for visible lather, rinse thoroughly, and dry with an individual disposable towel.

The school nurse will consistently provide training tutorials regarding proper handwashing techniques. Teachers will be required to share the handwashing video periodically.

B5. How to Cough or Sneeze

Coughs and sneezes that are not related to COVID-19 or other illness will understandably occur, and ACCA will remind students of proper coughing and sneezing etiquette when wearing a mask. It is still a good idea to cough or sneeze into one's elbow, with a mask on. Then, the student or staff member must wash their hands and change to a clean mask at the next opportunity, placing their original mask in a Ziploc bag. If coughing is repeated, students should be evaluated by the school nurse and possibly sent home. Adults should arrange coverage and leave to be tested.

B6. Difficult-to-Clean Classroom Materials

Educators and custodians will do their best to provide high hygiene standards outlined in these protocols. However, it is recognized that in a classroom, many times, multiple hands will touch one item. We will do our best to limit objects that require or allow multiple hands on them and are requested to wipe down any materials that must be in the room on a frequent basis. Going further, wherever possible, non-educational items that are touched frequently by multiple hands and cannot be wiped clean will be removed from the classroom.

- Classroom libraries and shelving may be turned towards the wall.
- All items that are considered "shareable" items will be removed or placed in teacher closets.

All ACCA students will be expected to bring with them each day: laptop computer, earphones, water bottle, basic school supplies (pen, notebook, paper, etc.) to avoid sharing of materials. Students will be expected to take home all items at the end of each day.

B7. Protocols for Cleaning Facilities under Standard Conditions

In accordance with CDC guidance, normal routine cleaning with soap and water removes germs and dirt from surfaces, which lowers the risk of spreading COVID-19 infection.

Current guidance from health experts indicates that airborne transmission is of greater concern than surface transmission. However, teachers and staff are encouraged to clean and disinfect shared materials and items that are difficult to clean.

During routine cleaning, custodians will use effective all-purpose cleaners as they typically do when a virus is not present. Classrooms will have improved routine cleaning and disinfecting of facilities.

Deep cleaning of facilities will occur when students and staff are not present in buildings.

Floors in all common areas will be washed daily. Classroom floors will be washed a minimum of twice per week and more frequently if required.

Each teaching or administrative staff member will be given basic cleaning supplies, which they may use at their discretion to complement the cleaning conducted by the custodial staff.

Hand sanitizer stations will be placed in each classroom and throughout the building.

High touch areas, such as doorknobs, railings, light and water fixtures, elevator buttons, counters, chair arms, phones, etc. will be sprayed using a non-toxic, EPA-approved disinfectant. The surface will be left to air dry, unless it must be used immediately, in which case it will be wiped down. The district will provide EPA approved disinfectant spray in each core classroom.

Custodians **will not** attempt to make disinfectant dilution stronger than it will be when filled through a mixing station. A stronger solution will not be more efficient or effective because coronaviruses are readily destroyed by soap. All cleaning solutions will be kept out of the reach of children. For safety and environmental health reasons, educators and other non-custodial staff should not bring or request donations of cleaning supplies, except for disinfectant wipes. ACCA will provide supplies needed for everyday use. Custodians will conduct high touch common area wipe downs for at least two cycles each day. They will also monitor hand soap, hand sanitizer and paper towels throughout the day.

Water Fountains

All water fountains are currently closed. A bottle filling station has been installed. Students and staff are encouraged to bring refillable bottles that are labeled for individual use.

HVAC

The pre-occupancy and post-occupancy run times have increased from 2 hours to 3 hours. The HVAC system has been updated to begin running earlier in the morning. All systems have received updated filters and are routinely serviced.

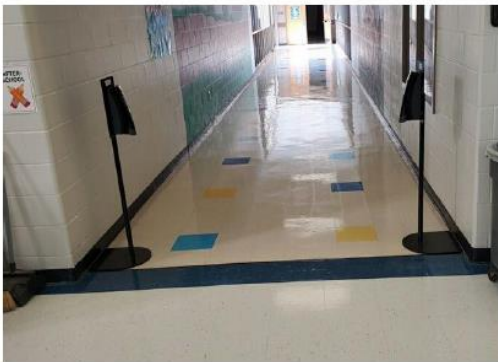
Plumbing

The Office of Facilities has initiated weekly water flushing during building low occupancy periods.

Facilities Services Return to School Prep

- **Hand Sanitizer + Disinfectant**

- Installed hand sanitizer stations in common areas and by time clocks
- Installing hand sanitizer stations in core classrooms (timeline 09.30.20)
- Provided EPA approved disinfectant (spray) in each core classroom
- Installing paper towel dispenser in each core classroom



B8. Ventilation

Although research is ongoing, consensus has emerged about the importance of ventilation in reducing the chance that the virus will spread. The district will begin running all systems 3 hours prior to student arrival to push additional clean air in and increase circulation.

B9. Be Prepared for Long Term, COVID-Related, Districtwide Shut-Down

Our community must be prepared for the possibility that a subsequent “wave” of rising COVID-19 cases may cause state officials to call for another long-term shutdown of schools. In the event of a longer-term shut-down, APS will make every effort to provide staff, students, and families with opportunities to remove belongings and needed materials on the last day before the shut-down.

Section C: Physical Distancing

C1. Maintaining Physical Separation

Current guidance seeks to maximize the benefits of in-person school while providing science-based minimum safety requirements. ACCA will provide six feet of social/physical distance to the best of our ability and will utilize outdoor spaces whenever feasible. Within classrooms, individual student desks or tables will be separated from surrounding desks/tables.

Classroom Reminders

- Students and staff will wear masks while in the classroom.
- Markings and signage will be posted on floors and walls to remind students and employees to remain six feet apart when waiting to enter the building, walking in hallways, etc.
- Adjustments will be made to seating and desks, when necessary, to allow for employees to maintain social distance when completing work.
- In-person class size will be reduced and adjustments to seating/desks will be made in support of social distancing practices when feasible.
- Public health guidelines will be followed for the assembly of students in common areas (e.g., media center, labs and building entry).
- For students with an IEP for Speech Services and/or OT/PT, therapists will make a schedule that combines both virtual and in-person services depending on the students who return and student needs. If a therapist is on telework, they will provide services virtually. For safety, some therapists may decide that although they are in person, services will be provided virtually.

The administrative team will develop and communicate passing protocols to maintain this distance when students are entering and exiting the building and moving through the school (including to and within restrooms) as best feasible. Specifically, staff and students will be educated about not mingling or lingering in hallways and following one-way traffic patterns to minimize respiratory air exchange between groups.

Educators and other employees who work with students who require closer proximity will be provided with additional protective equipment including eye protection (e.g., face shields), a mask/face covering, and gloves. Disposable gowns will be readily available and must be used in any instance in which educators or staff may encounter bodily fluids.

Hallway Traffic

Students and staff will follow the flow of traffic signs throughout the hallways and stairwells. Stairwells have been designated as one way (up or down) with signage.

Students must walk on the right side of all halls and stairs. Teachers will monitor transitions from their doorway.

Entry/Exit Points

See Arrival (section C7) for more information on designated entry and exit points.

C3. Utilizing Outdoor Space

Outdoor space will be used when feasible.

C4. Procedures for Student Use of Bathrooms

To ensure physical distancing, teachers will only allow one student out of the room at one time. Students should utilize the restrooms upon and exit (1st floor).

Students are asked to use good common sense and if there are more than 2 others in the restroom, they are asked to wait outside. There will be signs to remind students of the need for social distance.

Students may not linger in the restroom for any reason.

C5. Staffing and Human Resources

School employees who indicated that they could return face-to-face will return to work on January 19th to prepare for in-person teaching as denoted by the proposed schedule. Employees unable to return to work may request telework or leave.

Wednesdays will remain an asynchronous day for students to allow for deep cleaning, the building will remain closed for staff members that are not custodial or maintenance team members.

C6. Prohibition on Gatherings and Field Trips

In person, school-wide assemblies are prohibited. Apart from virtual field trips, all physical field trips are prohibited until further notice. Only GHSA Sanctioned Sports will be allowed for the initial return. All clubs and activities will remain virtual. **No students will be allowed to stay after school. Failure to follow this will result in the student being returned to online virtual learning.**

C7. Avoiding Clusters and Groupings

Schools will establish procedures for reducing the opportunity for clusters of students to form, including establishing hallway traffic patterns, and managing entry into the building. Students arriving on school buses will enter the building with their own bus

bubble and, whenever possible, other bus bubbles will remain on the bus to enter with a time-delay to reduce hallway mixing.

Arrival

- Students will enter and be temperature screened.
- One staff member will be assigned to act if a student's temperature is above 100.
- If a student's temperature is above 100, they will be pulled to the side and screened in 15 minutes with a handheld thermometer.
- If the student still registers a temperature over 100
 - They will be escorted to the Nurse's office.
 - Parents will be contacted to come pick up the student or to get permission for the student to drive home on their own.
 - Parents will be notified that they cannot return to school until they are fever free for 24 hours without fever reducing medication.
 - Parents will also be told that if the student does test positive for COVID-19, they must notify the school nurse immediately.
 - If a student tests positive for COVID-19 they cannot return to school until they have submitted to the nurse clearance by a doctor and 2 negative COVID-19 tests who will then inform the family that the student can return to school.

Buses

As buses arrive, they will be unloaded one bus at a time. Students will enter and stand in the designated area for screening. Every attempt will be made to always keep students 6 ft apart.

Car Riders & Car Drivers

Car riders and drivers will start entering the building at 8:30 a.m.

Students will go directly to their classroom. Food and drink are not allowed inside labs.

Dismissal

- We will begin dismissal at 2:30 p.m.
- Students will be dismissed via intercom by school.
- All students must move expeditiously through the building and follow social distancing guidelines.
- All students must exit the building immediately.
- All students that drive must move directly to their cars and exit the campus immediately.
- All bus riders must go directly to their buses and not congregate.

C8. Eliminating Unnecessary Entry into School Buildings

All student drop-offs must take place outside of the school including on the first day of school. Our staff will welcome and greet all students, ensuring a safe transition to the classroom.

C9. Parent/Caregiver Meetings and Visits to the School

When it is necessary for parents/caregivers to attend a gathering at their child's school all meetings shall be held virtually/remotely. This includes curriculum nights, open houses, GO Team, PTA, and other group meetings with parents/caregivers.

All meetings will be conducted virtually until further notice.

C10. Policy on Tutors and School Volunteers

All visitors to the building that are not employed by APS will not be permitted to enter the building. This is inclusive of all parents & guardians.

C11. Safe Administration of Medication

To protect physical distancing students who need to take regular medication while at school, the timing will be arranged by the school nurse for the students to come to the clinic to take their medicine. Nurse will provide the necessary medications to students at that time.

C12. Transportation Procedures

On the Bus

One of the most challenging spaces for physical distancing is on the bus. The safety of students, employees, and drivers is our highest priority, and everyone must do their part to stay safe. All students will be required to wear masks and maintain physical distance while on the bus. However, given current realities, it is likely not possible to consistently maintain the recommended 6 feet social distancing on school buses. APS encourages families to make transportation decisions that they believe are best for their children.

General Health and Safety Measures (all vehicles and routes)

Families will be encouraged to voluntarily walk, drive, or bike to school, to help us provide maximum physical distancing for those who need transportation.

- Before entering the building, students will be pre-screened, and temperatures will be checked. Anyone with a temperature at or above 100.4 will not be permitted inside. Individuals must stay home if they have any symptoms of COVID-19. Student's temperatures will not be checked prior to them getting on the bus.
- Students, drivers, and monitors (if present) must wear masks or face coverings, always.

-
- APS will provide an emergency supply of masks and face coverings, available on all vehicles, in case a student arrives without one.
 - Hand sanitizer will be kept aboard the bus and used throughout the day.
 - Windows on the vehicle will be kept open to the greatest extent possible. During bad weather, even a crack of outside air will assist with ventilation. If windows must be closed, the ventilation will be set to bring in fresh air / to prevent recirculating air.
 - Vehicles will be cleaned with a nonhazardous disinfectant (or plain soap and water) between every route, with weekly enhanced cleaning.
 - Parents/caregivers will be encouraged to speak with their child(ren) about following the driver and monitor's instructions including sitting where they are assigned to sit.
 - If a driver, monitor, or student becomes sick with COVID-19, those who were potentially exposed will be notified based on bus-specific contact information gathered at the time of each student's departure from the bus; and thorough cleaning and sanitization will take place before the vehicle can be used again.
 - If a student is **unable** to wear a mask but needs to be in school, parents/caregivers should contact the school to discuss disability accommodations.
 - Parents of students who can wear a mask, but do not do so, will be contacted by the school to discuss a solution. If this becomes a pattern, the student may be suspended from the bus.
 - Parents and caregivers will be encouraged to reinforce bus rules about maintaining quiet, calm behavior on the bus. Loud talking, yelling, or singing are known to disperse infectious respiratory droplets more widely.

C13. Food & Nutrition Services

ACCA does not serve breakfast or lunch. Students should follow home school guidelines regarding receiving breakfast and lunch. Food and drink are not allowed inside ACCA labs. Schools will develop a meal schedule that allows for students to eat breakfast and lunch at their home schools.

Drinking fountains are turned off. We encourage all families to send your child to school with a water bottle that has their name clearly marked. To avoid crowding at the bottle filling station, students and staff will be encouraged to bring their own filled water bottle each day.

Section D: Communication

ACCA and Atlanta Public Schools are committed to providing our parents with the most up to date information possible.

(Cases Reported by Board of Health): First and foremost, COVID-19 is a reportable disease and confirmed cases are reported by the laboratory or health care provider to the local board of health. Atlanta Public Schools (APS) maintains communication with

local boards of health for surveillance and tracking of self-reported cases. Cases reported by the board of health are managed by the local entity and communication is provided by the individual parties.

(Cases Reported by Parents or Staff): APS' Comprehensive Health Services department also monitors and maintains self-reported COVID-19 cases. If a student or staff person tests positive and it is reported to school administrators, the information is shared with HR and health services for case investigation (which includes tracking and tracing) in collaboration with local boards of health. Once a case has been identified, parents are contacted within the same day if possible (not to exceed a period of 24 hours), to inform them of potential exposures. Written communication is sent per our procedures for notification that include the date of exposure, length of quarantine period and public health resources.

Contact tracing will be implemented based on GA DPH and local Boards of Health Guidelines (Fulton and Dekalb) for reportable diseases.

Updates

Routine communication will continue via Remind 101, school website, social media (Twitter and Facebook) and monthly newsletter. Please be sure that the front office and your child's teachers have updated contact information for you.

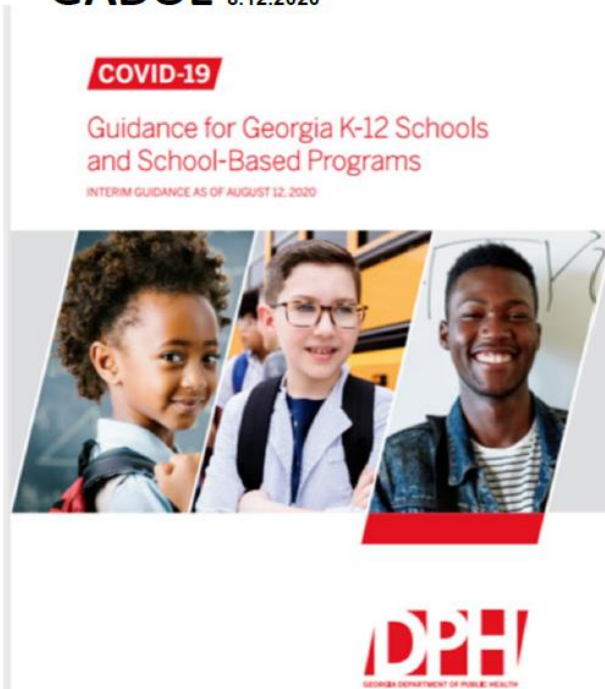
Parents Communicating regarding Absences

Parents should always inform teachers and Ms. Tanya Culbreth, School Secretary, of student absences.

Section E: Exposure and Potential Exposure Response

E1. Coordination with Public Health Officials

Updated Guidance from DPH and GADOE 8.12.2020



In order to secure the health, safety, and protection of children and their families across the state of Georgia, the Governor's Office worked closely with the GA Department of Public Health (DPH) and Department of Education to develop guidance for Georgia's schools and school-based programs. The toolkit includes required and recommended health related guidance for:

Families and Students
School Districts
Healthcare Providers



E2. Emergency Building/Classroom Closure Policy

- What is the process for communication if a student or staff tests positive and the school is informed?
 - Information is reported to APS HR and Health Services
 - Employees will follow the guidelines provided from their healthcare provider.
 - District prepares and provides communication letter to send home to parents. Phone calls are also made in follow up for individuals identified as close contact.

- The district, in consultation with the local boards of health, provides names of individuals determined to have been in close contact for case consultation.
- Depending on the outcome of the investigation, a determination is made as to whether a partial closure is needed or whether select individuals need to be quarantined.
- Due to privacy requirements, APS will not identify any individual who tests positive for COVID-19.



- After re-opening, what will outbreak related closures look like?
 - According to DPH, "A COVID-19 outbreak in a school setting is defined as: Two more laboratory confirmed COVID-19 cases among students or staff with illness onsets within a 14-day period, who are epidemiologically linked (e.g., have a common exposure or have been in contact with each other), do not share a household, and were not identified as close contacts of each other in another setting during standard case investigation or contact tracing". If an outbreak is confirmed, school closures will be implemented for their time frame designated by local public health officials.
- What happens if someone tests positive for COVID?
 - If a student, teacher, or staff member tests positive for COVID-19 and has exposed others at the school, classrooms and office areas may need to close temporarily as students, teachers, and staff isolate and the area is cleaned. In consultation with the local public health department, the school district may also decide whether school closure is warranted, including the length of time closure may be necessary.
- What will happen if the spread increases after returning? Will we return to virtual?
 - Once we reopen schools, the district will follow the guidance outlined by the Department of Public Health and local boards of health as outlined below:
 - (Outbreaks) According to DPH, "A COVID-19 outbreak in a school setting is defined as: Two or more laboratory confirmed COVID-19 cases among students or staff with illness onsets within a 14-day period, who are epidemiologically linked (e.g., have a common exposure or have been in contact with each other), do not share a household, and were not

identified as close contacts of each other in another setting during standard case investigation or contact tracing". If an outbreak is confirmed, schools' closures will be implemented for the timeframe designated by local public health officials.

- (Non-Outbreak Closures) When a student, teacher, or staff member tests positive for COVID-19 and has exposed others at the school, classrooms and office areas may need to close temporarily as students, teachers, and staff isolate and the area is cleaned. In consultation with the local public health department, the school district may also decide whether school closure is warranted, including the length of time closure may be necessary.
- During either scenario of closures, virtual classes will resume.

Section F: Education and Training

F1. Employee Communication and Training

A mandatory video training, *COVID-19 Safety Standards Training* is posted on the internal staff website. All APS Employees are mandated to participate and pass the COVID19 training and assessment.

F2. Ongoing Education for Adults

All adults must work together as partners to ensure the safety of the school community. To support understanding and awareness of health guidelines and requirements, ACCA will communicate and provide reminders about the following:

- weekly reminders about morning health checks that include how to obtain testing and who to notify if they answer yes to any questions;
- what to do if you have symptoms, have potentially been exposed, or test positive for COVID-19;
- medical conditions that place individuals at higher risk should they be exposed to COVID-19;
- mask requirements, including sending at least one backup mask to school with the student, along with a Ziploc bag in case the mask needs to be changed during the day; as well as instructions for proper [mask wearing](#) technique;
- hand-washing technique;
- cough/sneeze etiquette;
- flu vaccine information (with Department of Public Health);
- the importance of updated parent/caregiver contact information; and
- school-specific procedures.

F3. Educating Students on Safety Precautions

ACCA will review health and hygiene procedures with students including the importance of mask wearing, physical distancing, proper mask wearing technique (including not touching one's face), proper handwashing and cough/sneeze techniques and other key messaging.

Section G. Scheduling

All students, face-to-face and virtual, will follow the same schedule. ACCA morning classes will be held from 9 a.m. – 11 a.m. The following high schools participate in morning classes from 9 a.m. – 11 a.m.: North Atlanta, CSK, BEST, Jackson, Midtown (Grady) and Douglass.

ACCA afternoon classes will be held from 12:30 p.m. – 2:30 p.m. The following high schools participate in afternoon classes from 12:30 – 2:30 p.m.: Therrell, Carver Early College, South Atlanta, Mays, Washington, Phoenix and Carver STEAM.

There will be no student or staff changes unless necessary.

Students will continue with asynchronous learning on Wednesdays for the remainder of the 2020-2021 school year.

Appendix

[APS Protects](#) (*safety precautions*)

[Considerations for Mask Wearing](#) and [Surgical Mask Usage](#)

[Facilities Readiness Inventory](#) (*for reporting areas of concern*)

[Guidelines for Exposure](#)

[Return to Work Guidelines](#)